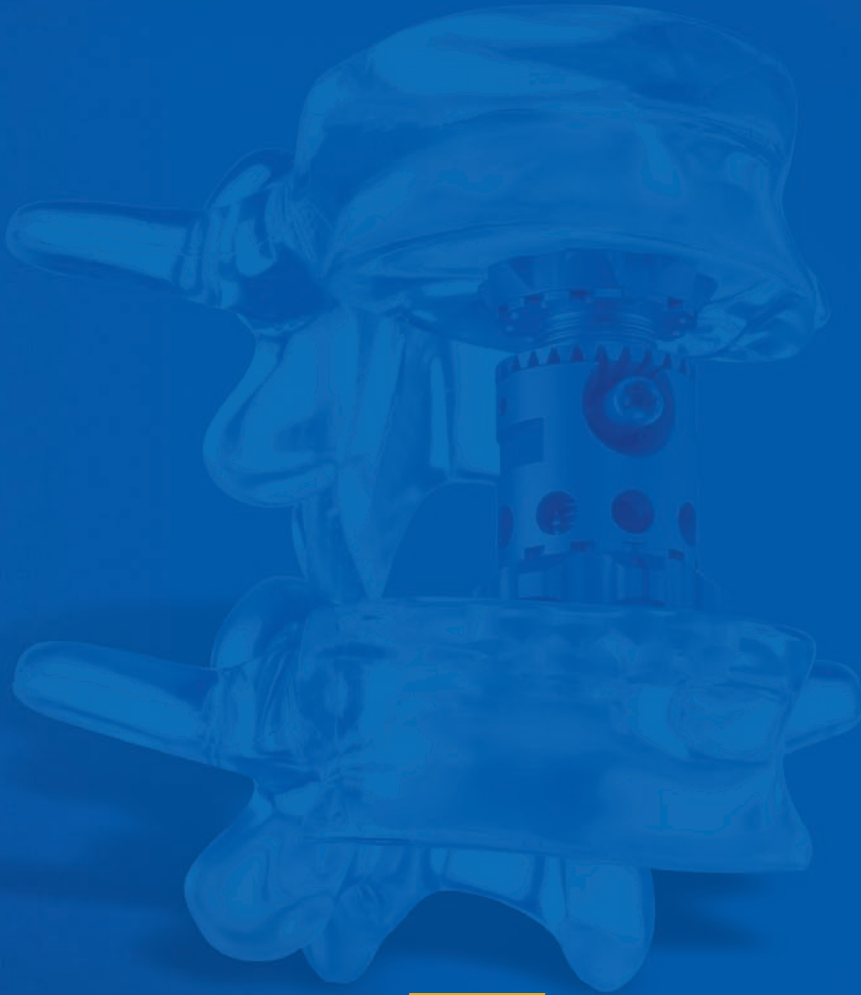


# obelisc<sup>®</sup>

## vertebral body replacement



**100** Years

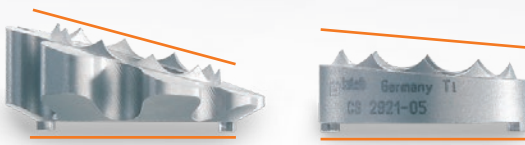
Over A Century Of Innovation



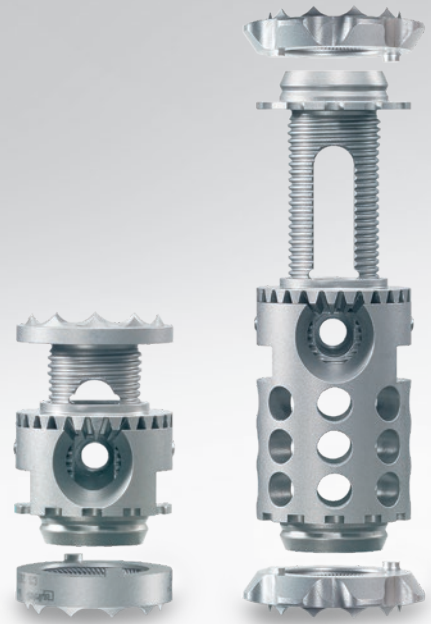
**Ulrich**  
medical USA

## System

- Expandable vertebral body replacement for bridging spinal defects
- Thoracic, lumbar
- Expandable in situ up to 132mm in height
- External diameter of center piece 20mm
- End caps designed with small teeth (1.5mm height) to minimize migration and protect against dislocation
- Titanium alloy material



Multiple angled end cap options (0-20°)



Consisting of a center piece and one or two end caps (17-23mm center piece has fixed end caps)



Differently sized and color coded end caps (20-32mm diameters)

## Indications

Vertebral body replacement is intended for use during open surgical procedures in the thoracolumbar spine (T1-L5) to replace a collapsed, damaged, or unstable vertebral body due to tumor or trauma (e.g., fracture).

The obelisc vertebral body replacement is intended to be used with supplemental internal spinal fixation systems that have been labeled for use in the thoracic and lumbar spine (i.e., posterior pedicle screw and rod systems, anterior plate systems, and anterior screw and rod systems). The use of bone grafting material with the obelisc vertebral body replacement is optional.



## Advantages

### Large range of height adjustment

- Low profile distractor
- Continuous expansion in situ
- Flexible height adjustment

### Large selection of end caps

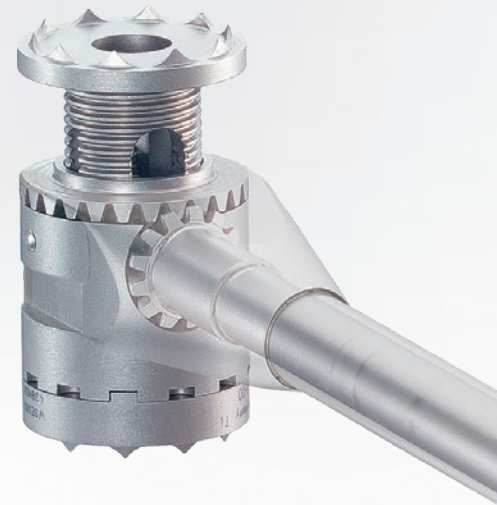
- Minimizes subsidence (20-32mm diameters)
- Variety of sizes for a wide range of patient anatomies

### Universal

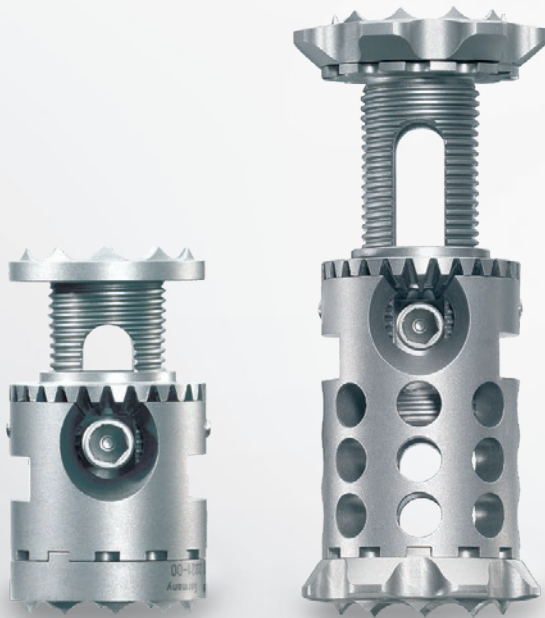
- Multiple surgical approach options (posterior, anterior, lateral)
- Variable implant placement
- Versatile implant range

### Time-saving

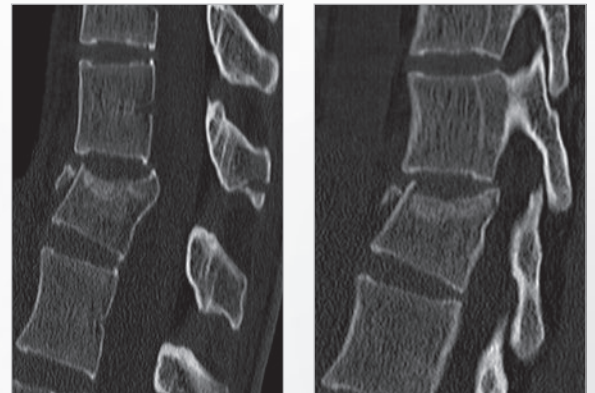
- Simple and fast
- Easy to adjust, remove and change implant during surgery



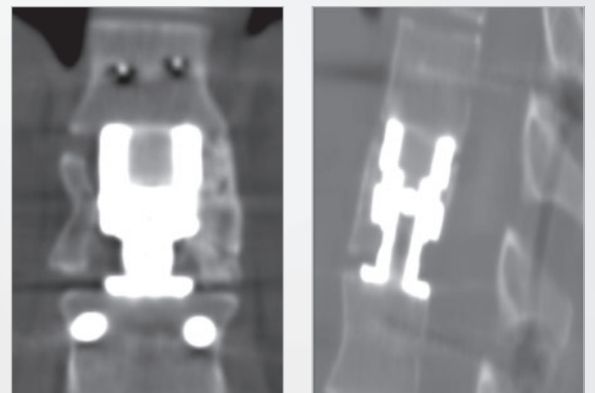
Beveled gear driven design



Large size range, 17mm - 132mm heights



Female, 36 yrs, fracture TH12



14 months post op, instrumentation obelisc

## Components

Implants	Height	Angle	Product Number
<b>obelisc long locking screw</b>			CS 2901
<b>obelisc short locking screw</b>			CS 2901-01
<b>obelisc center piece, Ø 20mm</b>	17-23mm		CS 2920-17
	20-28mm		CS 2920-20
	23-31mm		CS 2920-23
	27-38mm		CS 2920-27
	32-47mm		CS 2920-32
	40-62mm		CS 2920-40
	53-87mm		CS 2920-53
	76-132mm		CS 2920-76
<b>obelisc end cap, Ø 20mm - grey</b>		0°	CS 2925-00
		5°	CS 2925-05
		10°	CS 2925-10
		15°	CS 2925-15
<b>obelisc end cap, Ø 24mm - light blue</b>		0°	CS 2926-00
		5°	CS 2926-05
		10°	CS 2926-10
		15°	CS 2926-15
<b>obelisc end cap, Ø 26mm - yellow</b>		0°	CS 2927-00
		5°	CS 2927-05
		10°	CS 2927-10
		15°	CS 2927-15
<b>obelisc end cap, Ø 29mm - green</b>		0°	CS 2928-00
		5°	CS 2928-05
		10°	CS 2928-10
		15°	CS 2928-15
<b>obelisc end cap, Ø 32mm - blue</b>		0°	CS 2929-00
		5°	CS 2929-05
		10°	CS 2929-10
		15°	CS 2929-15
<b>obelisc end cap, oval 32 x 26mm - bronze</b>		0°	CS 2930-00
		5°	CS 2930-05
		10°	CS 2930-10
		15°	CS 2930-15
		20°	CS 2930-20

US0202 R8 / 2018-08



Over A Century Of Innovation



18221 Edison Avenue, Chesterfield, MO 63005  
 Phone: 866.519.0268 | Fax: 636.519.0271  
 www.ulrichmedicalusa.com  
 IFU: www.ifu.ulrichmedical.com



**World Headquarters**  
**ulrich medical®**  
 Buchbrunnenweg 12  
 89081 Ulm, Germany

